

# W7002 Series: W7152, W7152P, W7172, and W7252 Cordless Impact Wrench

Figure 1. Exploded View (Dwg. 47621726)

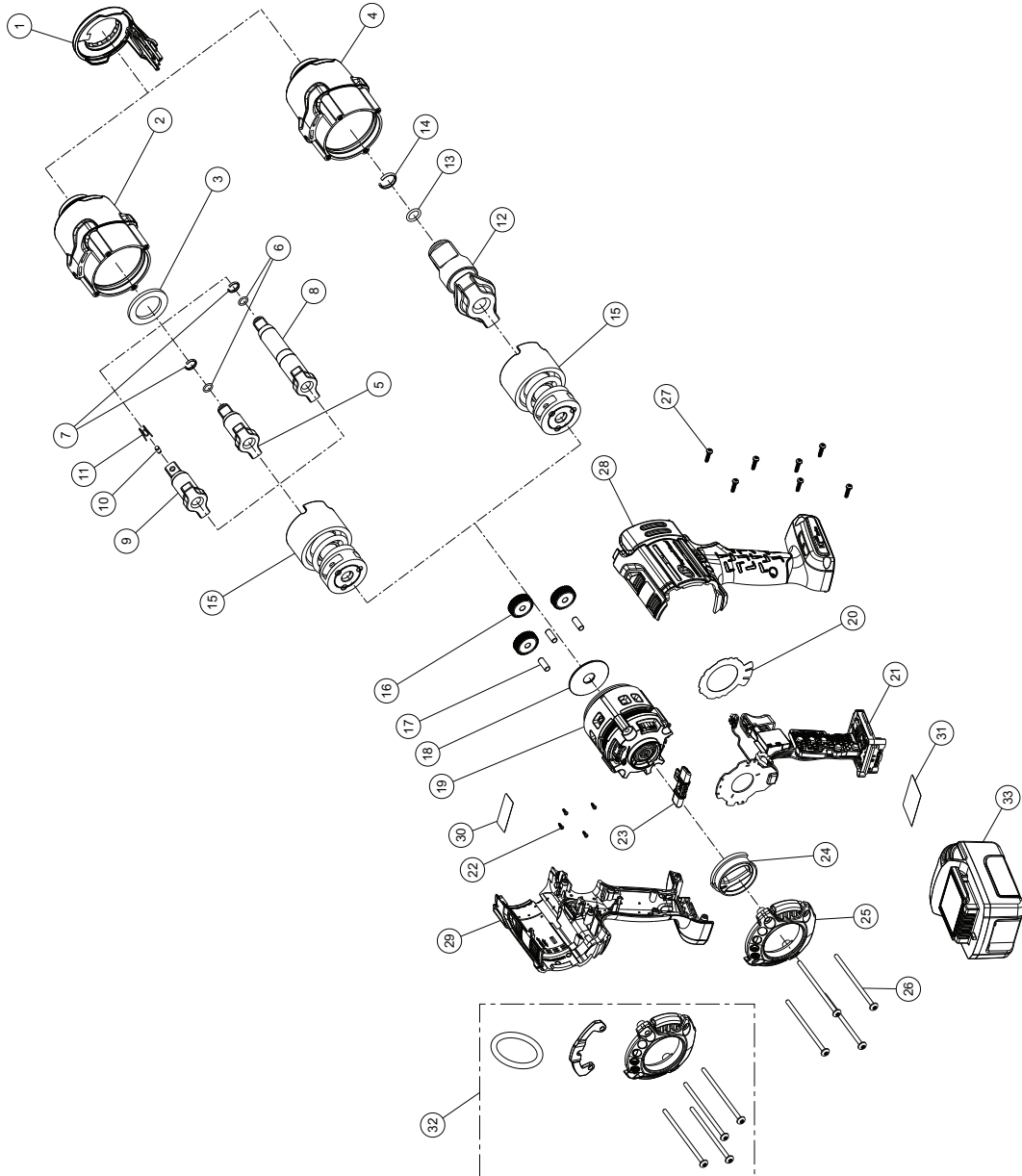


Table 1. W7152, W7152P, W7172, and W7252 Cordless Impact Wrench - Parts List

Item	Part Description	Part Number (CCN)	Item	Part Description	Part Number (CCN)
1	Led Kit	W7152-KLED (47631609001)		Anvil Kit for W7152	W7152-K626 (47631603001)
	Hammer Case Kit for W7152, W7152P and W7252	W7152-K727 (47631602001)	5	1/2" Anvil, Retaining Ring	—
1	LED Assembly	—	6	O-Ring	—
2	Hammer Case Assembly	—	7	Retaining Ring	—
3	Washer	—		Anvil Kit, for W7252	W7252-K626 (47633585001)
	Hammer Case Kit for W7172	W7172-K727 (47663576001)	8	1/2" Anvil, 2" Extended	—
1	LED Assembly	—	6	O-Ring	—
4	Hammer Case Assembly	—	7	Retaining Ring	—

**Table 1. W7152, W7152P, W7172, and W7252 Cordless Impact Wrench - Parts List (continued)**

Item	Part Description	Part Number (CCN)	Item	Part Description	Part Number (CCN)
	Anvil Kit for W7152P	W7152P-K626 (47631604001)	25	Backcap Kit	W7152-K40B (476316130001)
9	1/2" Anvil, Pin	—		Fastener Kit	W7152-K105 (47631614001)
10	Retaining Pin	—	22	Screw, Hall PCBA (QTY. 4)	—
11	Spring	—	26	Screw, Hammercase (QTY. 4)	—
	Anvil Kit for W7172	W7172-K626 (47663577001)	27	Screw, Housing (QTY. 7)	—
12	3/4" Anvil	—		Housing Kit	W7152-K40 (47631612001)
13	O-Ring	—	28	Left Housing	—
14	Retaining Ring	—	29	Right Housing	—
	Socket Retainer Kit for W7152 and W7252	2125QTi-K425 (80107733)	30	Warning Label	—
6	O-Ring	—	27	Screw, Housing (QTY. 7)	—
7	Retaining Ring	—		Label Kit	W7152-K99 (47631615001)
	Socket Retainer Kit for W7152P	2125PTi-K425 (80107725)	30	Warning Label	—
10	Retaining Pin	—	31	Information Label	—
11	Spring	—	32	Hanger Kit	W7152-K365B (47632290001)
	Socket Retainer Kit for W7172	2145-K425 (47118112)		Backcap	—
13	O-Ring	—		Screw, Hammercase (QTY. 2)	—
14	Retaining Ring	—		Screw, Long Hammercase (QTY. 2)	—
15	Impact Mechanism Kit			Ring	—
	for W7152, W7152P, W7252	W7152-K724 (47631605001)		Bracket	—
	for W7172	W7172-K724 (47696157001)	33	Battery, BL2022	BL2022 (47515902001)
	Gear Kit	W7152-K37 (47631606001)	(a)	Battery Charger	BC1121 (47507879001)
16	Planet Gear (QTY. 3)	—	(a)	Protective Tool Boot	W7152-BOOT (47621732001)
17	Gear Pin (QTY. 3)	—	(a)	Protective Tool Boot	W71 52-BOOTX (47621734001)
18	Cam Thrust Washer	—	(a)	Protective Battery Boot	BL2010-BOOT (47510964001)
19	Brushless Motor Kit	W7152-K54 (47631607001)	(a)	Tool Bag	TB4 (47543666001)
20	Insulator Sheet Kit	W7152-K624 (47633589001)	(a)	Grease	
	Drive Kit	W7152-K93 (47631611001)		IR #105 (1 LB Can)	105 1 LB (04279147)
21	Drive Assembly	—		IR #105 (8 LB Can)	105 8 LB (04264875)
31	Information Label	—		IR #67 (1 LB Can)	67 1 LB (03773009)
23	Directional Switch Kit	W7152-K75 (47631610001)		IR #67 (8 LB Can)	67 8 LB (03820008)
24	Regulator Kit	W71 52-K249 (47631608001)	(a)	Grease Gun	R000A2-228 (03095015)

(a) Indicates Not Illustrated.

## Parts and Maintenance

When tool life has expired, it is recommended that the tool be disassembled, degreased and parts separated by material for proper recycling. Tool repair and maintenance should only be carried out by an authorized Service Center. Refer all communications to the nearest **Ingersoll Rand** office or distributor.

## Related Documentation

Manuals can be downloaded from [ingersollrandproducts.com](http://ingersollrandproducts.com)

For additional information, refer to:  
 Product Safety Information Manual 04581146.  
 Product Information Manual 47621725001.  
 Declaration of Conformity 47589598001.  
 Hanger Install / Removal Instruction Card 47641906001 and 47642459001.